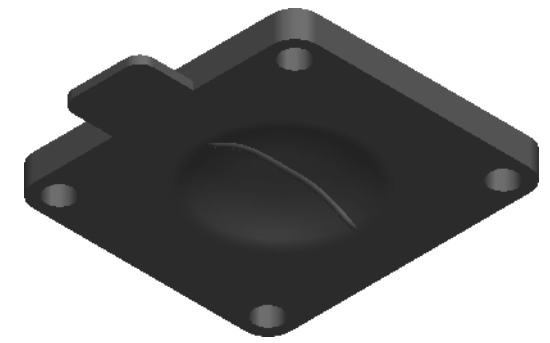
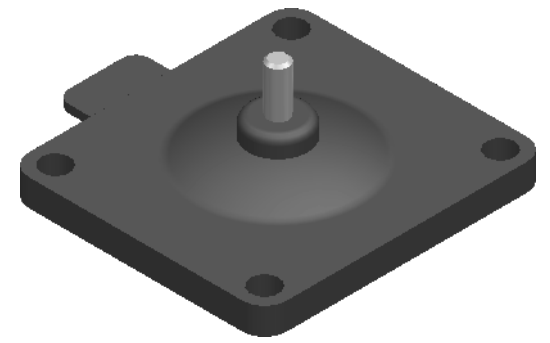


REVISION HISTORY			
REV	DESCRIPTION	DATE	APPROVED
F	Removed Kidney shape from diaphragm.	16/03/2022	JB



M4x0.7 INSERT SCREW

Ø 5.2 (4 Holes)

**Replacement Diaphragm for :-**  
 OEM PART = 600010-M-13  
 USED ON 3/4" (DN10-15) Diaphragm Valve

	NAME	DATE
DRAWN	M.MC KEON	03/16/22
CHECKED	M.MC KEON	11/15/17



**Material - EPDM**

TITLE **DD07-GE7**

Complies with CFR 177.2600  
 and Conforms to  
 USP Class VI Biological Reactivity  
 Tests Section #87 and #88

SIZE A **FOOT PRINT DIMENSIONS** REV F

FILE NAME: DD07-GE7 RevF.dft

SCALE: 1 : 1 Job: 51 SHEET 1 OF 1

Disclaimer - Diaphragm Direct® does not manufacture, represent, nor sell OEM valves or diaphragms manufactured by any other company. Diaphragm Direct® brand diaphragms are not sponsored by any other manufacturers. Any name, model, part number, brand, image, material or referral is for descriptive purposes only. Diaphragm Direct® brand replacement diaphragms are guaranteed to fit OEM equipment and meet or exceed OEM specifications. Diaphragm Direct® brand replacement diaphragms are covered by the standard Diaphragm Direct® limited product warranty.