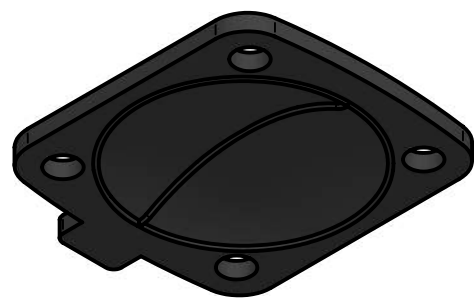
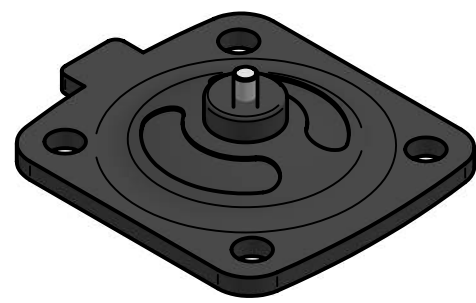


REVISION HISTORY			
REV	DESCRIPTION	DATE	APPROVED



**Replacement Diaphragm for :-**  
 OEM PART = 1P24 With Threaded Connection  
 USED ON 1.5" (DN40) Diaphragm Valve

Disclaimer - Diaphragm Direct® does not manufacture, represent, nor sell OEM valves or diaphragms manufactured by any other company. Diaphragm Direct® brand diaphragms are not sponsored by any other manufacturers. Any name, model, part number, brand, image, material or referral is for descriptive purposes only. Diaphragm Direct® brand replacement diaphragms are guaranteed to fit OEM equipment and meet or exceed OEM specifications. Diaphragm Direct® brand replacement diaphragms are covered by the standard Diaphragm Direct® limited product warranty.

	NAME	DATE		
DRAWN	M Mc Keon	07/22/18		
CHECKED	M Mc Keon	07/22/18		
<b>Material - EPDM</b>			TITLE <b>DD15-AE7</b>	
Complies with CFR 177.2600 and Conforms to USP Class VI Biological Reactivity Tests Section #87 and #88			SIZE A	REV <input type="checkbox"/>
			FOOT PRINT DIMENSIONS	
			FILE NAME: DD15-AE7.dft	
			SCALE: 1 : 2	1633-09-17-4 SHEET 1 OF 1