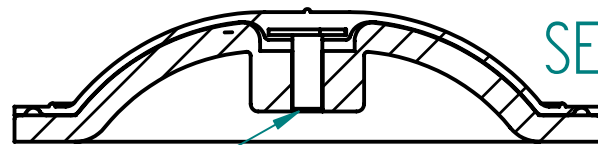
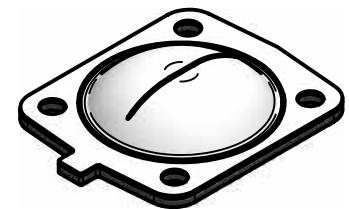


| REVISION HISTORY |             |      |          |
|------------------|-------------|------|----------|
| REV              | DESCRIPTION | DATE | APPROVED |



SECTION A-A

5/16" - 18 UNC (INSERT SCREW)



Replacement Diaphragm for :-  
 OEM PART = 600080-M-5E  
 USED ON 3" (DN80) Diaphragm Valve

|         | NAME       | DATE     |
|---------|------------|----------|
| DRAWN   | M. MC KEON | 08/31/14 |
| CHECKED |            |          |



**Material -**  
**EPDM BACKING**  
**PTFE - DIAPHRAGM**

TITLE  
**DD30-GTFM-E**

Complies with CFR 177.2600  
 and Conforms to  
 USP Class VI Biological Reactivity  
 Tests Section #87 and #88

|           |                              |          |
|-----------|------------------------------|----------|
| SIZE<br>A | <b>FOOT PRINT DIMENSIONS</b> | REV<br>B |
|-----------|------------------------------|----------|

FILE NAME: DD30-GTFM-E.dft

|              |          |              |
|--------------|----------|--------------|
| SCALE: 1 : 1 | ECO:0605 | SHEET 1 OF 1 |
|--------------|----------|--------------|

Disclaimer - Diaphragm Direct® does not manufacture, represent, nor sell OEM valves or diaphragms manufactured by any other company. Diaphragm Direct® brand diaphragms are not sponsored by any other manufacturers. Any name, model, part number, brand, image, material or referral is for descriptive purposes only. Diaphragm Direct® brand replacement diaphragms are guaranteed to fit OEM equipment and meet or exceed OEM specifications. Diaphragm Direct® brand replacement diaphragms are covered by the standard Diaphragm Direct® limited product warranty.