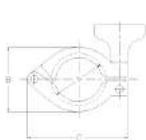
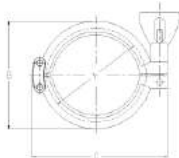


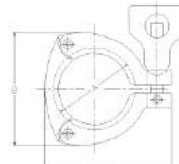
CLAMP Standards Dimensions



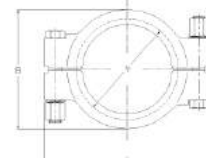
13MHS (1/2" ..3/4")



13MHHM



13MHS (1" ..4")



13MHP

Standard BS 4825 for pipe according ASTM A270

Size Inch	TC	Pipe Size OD x Thk	ID	# 13MHS			# 13MHHM			# 13MHP		
				A	B	C	A	B	C	A	B	C
(#) -A075..	25,0	12,7 x 1,65	9,4	28	35	51						
(#) -A075..	25,0	19,05 x 1,65	15,75	28	35	51				28	37	55
(#) -A150..	50,4	25,4 x 1,65	22,1	52	69	80	54	67	86	52	69	103
(#) -A150..	50,4	38,1 x 1,65	34,8	52	69	80	54	67	86	52	69	103
(#) -A200..	64,0	50,8 x 1,65	47,5	65,5	82	95	67,5	81	101	65,5	82	115
(#) -A250..	77,5	63,5 x 1,65	60,2	79	97	105	81	94	114	79	97	128
(#) -A300..	91,0	76,2 x 1,65	72,9	92,5	109	125	94,5	105	126	92,5	109	141
(#) -A400..	119,0	101,6 x 2,11	97,4	120,5	133	155	122,5	134	156	120,5	133	167
(#) -A600..	167,0	152,4 x 2,77	146,8				170	185	216			
(#) -A800..	217,5	203,2 x 2,77	197,66				221	235	270			
(#) -AA10..	268,5	254,0 x 2,77	248,46				271	185	325			
(#) -AA12..	319,0	304,8 x 2,77	299,26				322	340	380			

CLAMP **3** fitting

Investment cast pieces in **Stainless Steel AISI 304 – 1.4301**

Heavy construction provides protection against leakage or misalignment.

Held in position by hand tightened wing nut.

For fractional size fittings 13MHS one size accommodates 1/2" and 3/4" fittings

Hydrostatic tests : @ 70°F – 1500 psi (21°C – 152 bar)

@ 250°F – 1200 psi (121°C – 82,7 bar)

Double pin heavy duty clamp 13MHHM available in size 1" to 10" Tube OD

Note : one inch fittings take 1 1/2 clamp assemblies

psi / bar Service Rating

Temp/Press.	1"	1 1/2"	2"	2 1/2"	3"	4"	6"	8"	10"	12"
@ 70°F psi	500	500	450	400	350	200	150	100	50	n.a.
@ 21°C bar	34,5	34,5	31,0	27,5	24,0	13,5	10,0	6,5	3,5	n.a.
@ 250°F psi	250	250	250	200	150	125	75	50	-	n.a.
@ 121°C bar	17,0	17,0	17,0	13,5	10,0	8,5	5,0	3,5	-	n.a.

Wing nut tightened to = 2,8 Nm of torque

Service Ratings are based on **hydrostatic tests using Standard Buna material gaskets**, with proper expansion of ferrules, assembly of joints and absence of shock pressure.

For temperature above 121°C we recommend using 13MHP clamp only.

Three segment heavy duty clamp 13MHS available in size 12" Tube OD only

Hydrostatic tests: not available

Special Note concerning the limited use of PTFE gaskets:

Psi / bar service ratings shown for clamps DO NOT APPLY to 1" and above tube OD sized connections incorporating any gaskets of PTFE material. As PTFE material by nature is virtually incompressible and tends to "cold flow" under normal operating conditions, PTFE gaskets, when used with any standard clamp, are likely to leak at pressures far below these published service ratings.

To avoid possible leakage problems, we recommend contact us before considering the use of PTFE material and to discuss other viable alternatives. The above limitations do not apply to Fractional Sized 1/2" and 3/4" tube OD fittings and connections.

К-ТЕП — Фитинги Clamp

<http://k-tep.com.ua/>

✉ k-tep@ukr.net

■ Office +38 044 2091823

■ МТС +38 066 9076563

■ Киевстар +38 098 3676414

Skype: [k-teppumps](#)



Замечания

Условия поставки: DDP склад г. Киев

Заметки

Время поставки рассчитано согласно дате предложения и изменяется в зависимости от даты подтверждения заказа.

Размещая заказ, покупатель принимает предложение и все спецификации, характеристики и условия, указанные в данном документе.