



Sanitary
flow
equipment

Quality
System
Certified
ISO 9001



VS3V dimensions.doc
Rev.00 Page 1 of 1

VS3V 3Way Ball Valve Standards Dimensions

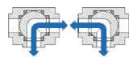
Three way ball valve full port or reduced, ball configuration at "L" or "T"
Actuator : 90° stainless steel handle, pad ISO 5211 – DIN 3337
Material : stainless steel AISI 316L (1.4404) with 4 seals in virgin PTFE

Operating conditions :

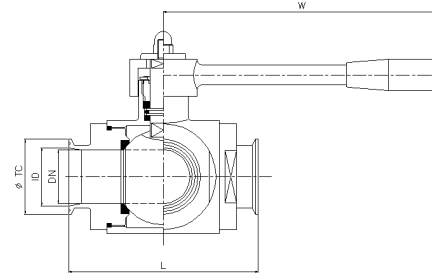
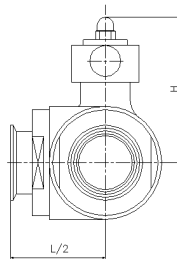
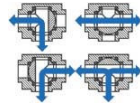
Maximum working pressure 30 barg at 25°C (see table)
Working temperature from -20°C to +160°C

MANUAL HANDLE
90° ON / OFF

ball at "L"



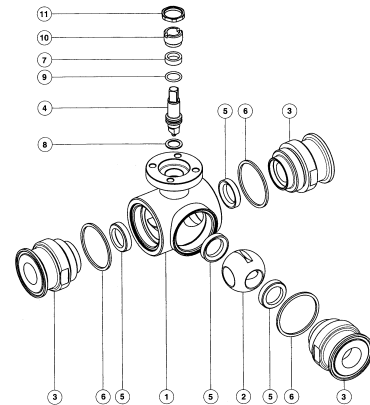
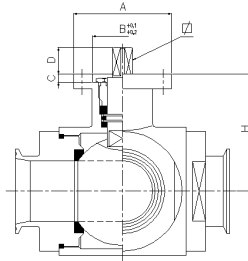
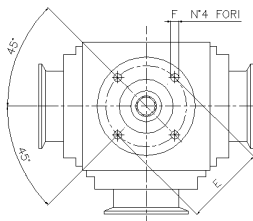
ball at "T"



CODE	DN	PN	ØTC	ID	L	L/2	H	W	Weight Kg
VS3V-TC 1/2"-L/T	10	40	25,0	9,4	108	54	60	110	1,10
VS3V-TC 3/4"-L/T	15	40	25,0	15,7	118	59	65	110	1,30
VS3V-TC 1"-L/T	20	40	50,4	22,1	130	65	70	160	2,50
VS3V-TC 1"1/2-L/T	32	40	50,4	34,8	156	78	95	190	4,90
VS3V-TC 2"-L/T	50	25	64,0	47,5	182	91	120	235	8,60
VS3V-TC 2"1/2-L/T	65	25	77,4	60,2	196	98	130	285	10,70
VS3V-TC 3"-L/T	80	16	90,9	72,9	256	128	145	310	22,10
VS3V-TC 4"-L/T	100	16	118,8	97,6	286	143	160	310	35,00

DIN 11851 fem/fem or other special end connections available on request

ISO 5211 MOUNTING PAD FOR PNEUMATIC ACTUATOR



CODE	A	B	C	D	E	F	ISO-DIN	□	Nm	H
VS3V-TC 1/2"-L/T	46	25	3	8	36	6	F03	9	10	46,5
VS3V-TC 3/4"-L/T	46	25	3	8	36	6	F03	9	12	49,0
VS3V-TC 1"-L/T	54	30	3	10	42	6	F04	11	23	56,5
VS3V-TC 1"1/2-L/T	65	35	4	13	50	7	F05	14	33	81,5
VS3V-TC 2"-L/T	90	55	4	15	70	9	F07	17	50	91,5
VS3V-TC 2"1/2-L/T	90	55	4	15	70	9	F07	17	60	101,5
VS3V-TC 3"-L/T	90	55	4	15	70	9	F07	17	110	116,0
VS3V-TC 4"-L/T	90	55	4	15	70	9	F07	17	130	131,0

Pneumatic actuator type : SR = Simple Effect, spring return DA= Double Effect, air to close
@Nm Maximum break-out torque in Nm.

In the interests of development and improvement of the product, we reserve the right to change the specifications without prior notice.

К-ТЕП — Санитарные шаровые краны

<http://k-tep.com.ua/>

✉ k-tep@ukr.net

■ МТС +38 066 9076563

■ Киевстар +38 098 3676414

Skype: [k-teppumps](#)



Замечания

Условия поставки DDP склад г. Киев

Заметки

Время поставки рассчитано согласно дате предложения и изменяется в зависимости от даты подтверждения заказа.

Помещая заказ, Покупатель принимает предложение и все спецификации, характеристики и условия, указанные в данном документе.
