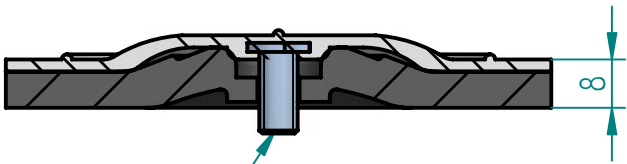
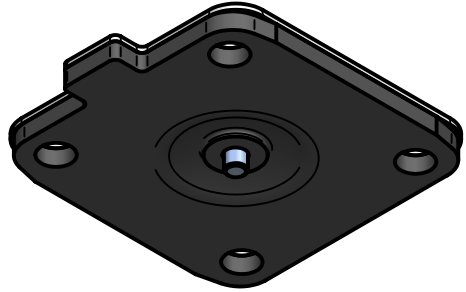
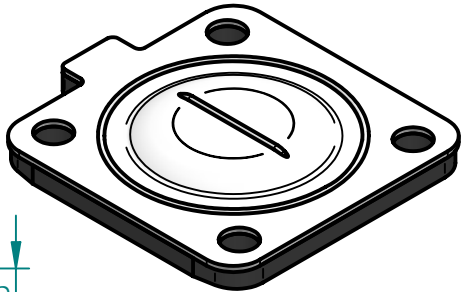


| REVISION HISTORY | | | |
|------------------|-------------|------|----------|
| REV | DESCRIPTION | DATE | APPROVED |

SECTION A-A




1/4" - 20 UNC (INSERT SCREW)



Replacement Diaphragm for :-

OEM PART = 600040-M-5E

USED ON 1.5" (DN40) Diaphragm Valve

| | | | |
|---|------------------------------|----------|---|
| | NAME | DATE |  DIAPHRAGM DIRECT |
| DRAWN | M. MC KEON | 08/30/14 | |
| CHECKED | | | |
| Material - EPDM BACKING PTFE - DIAPHRAGM Complies with CFR 177.2600 and Conforms to USP Class VI Biological Reactivity Tests Section #87 and #88 | | | TITLE DD15-GTFM-E |
| SIZE A | FOOT PRINT DIMENSIONS | | REV B |
| SCALE: 1 : 1 | | | FILE NAME: DD15-GTFM-E.dft ECO:0605 SHEET 1 OF 1 |

Disclaimer - Diaphragm Direct® does not manufacture, represent, nor sell OEM valves or diaphragms manufactured by any other company. Diaphragm Direct® brand diaphragms are not sponsored by any other manufacturers. Any name, model, part number, brand, image, material or referral is for descriptive purposes only. Diaphragm Direct® brand replacement diaphragms are guaranteed to fit OEM equipment and meet or exceed OEM specifications. Diaphragm Direct® brand replacement diaphragms are covered by the standard Diaphragm Direct® limited product warranty.